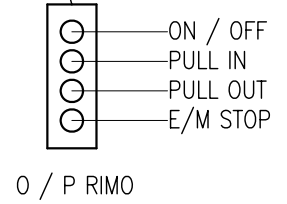
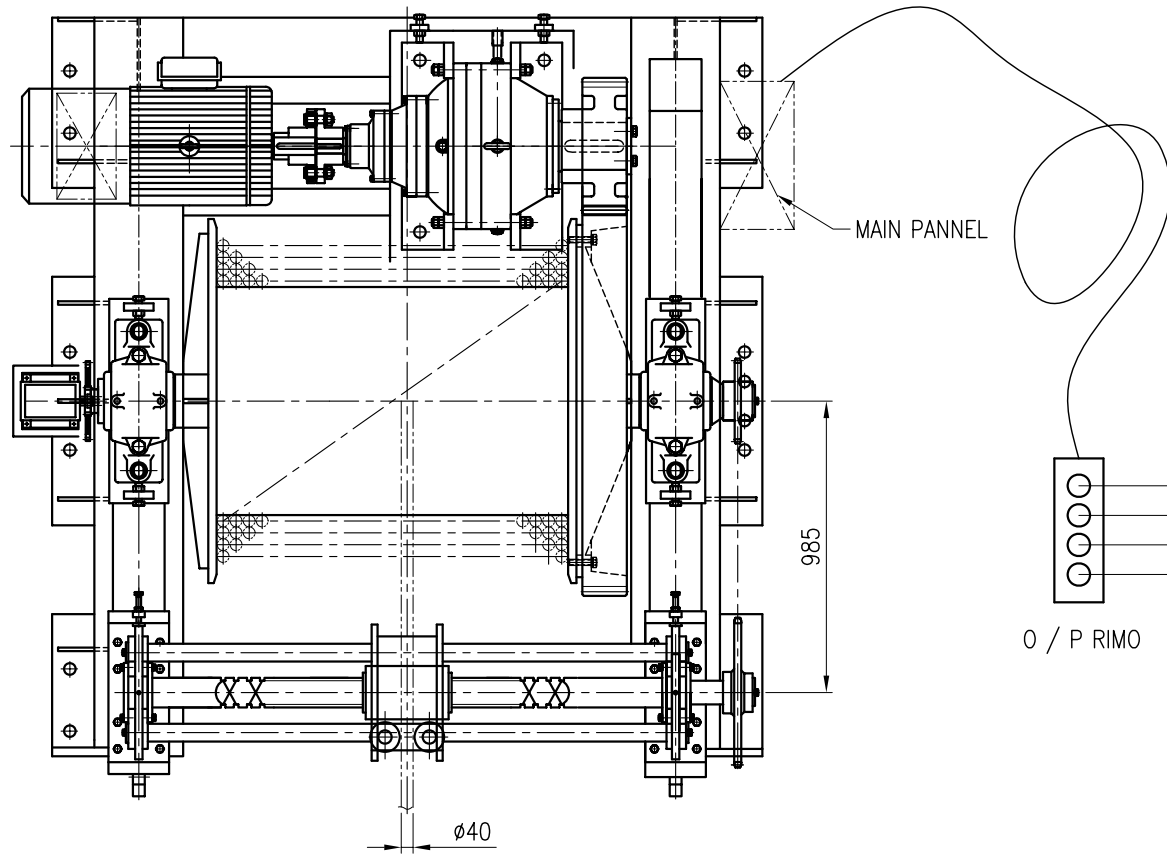


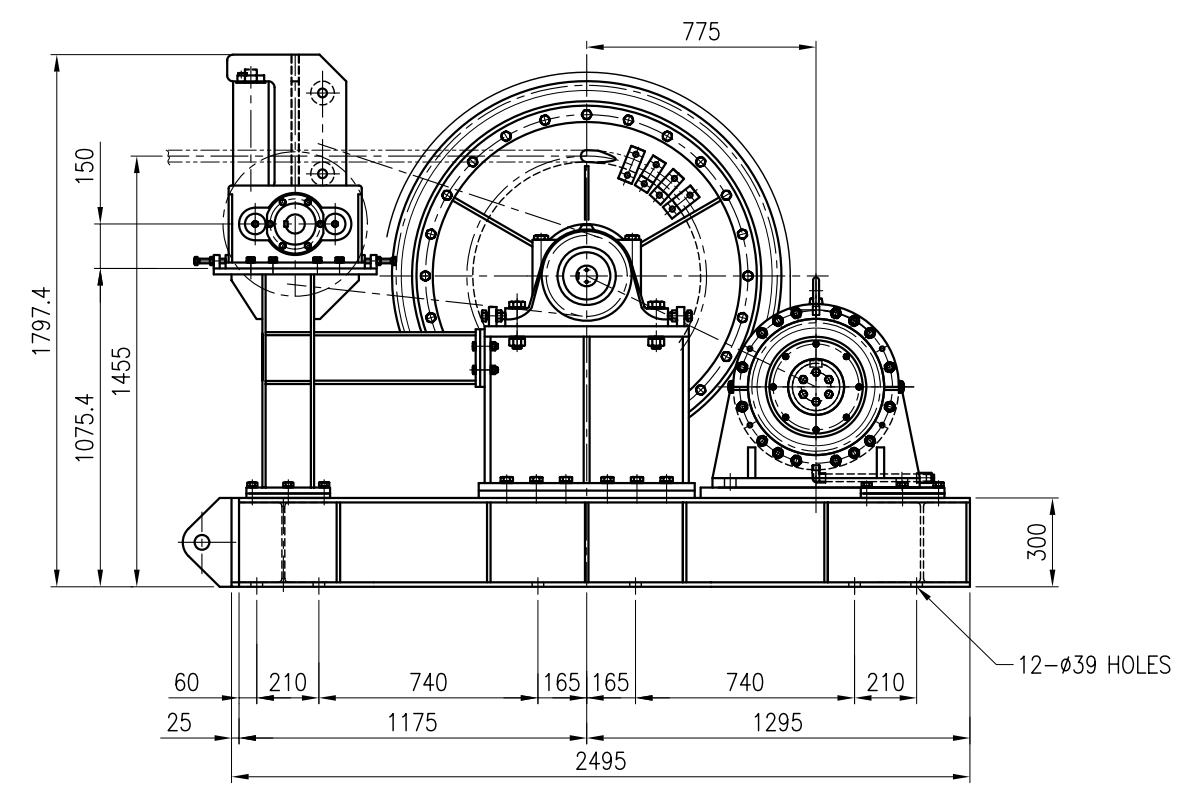
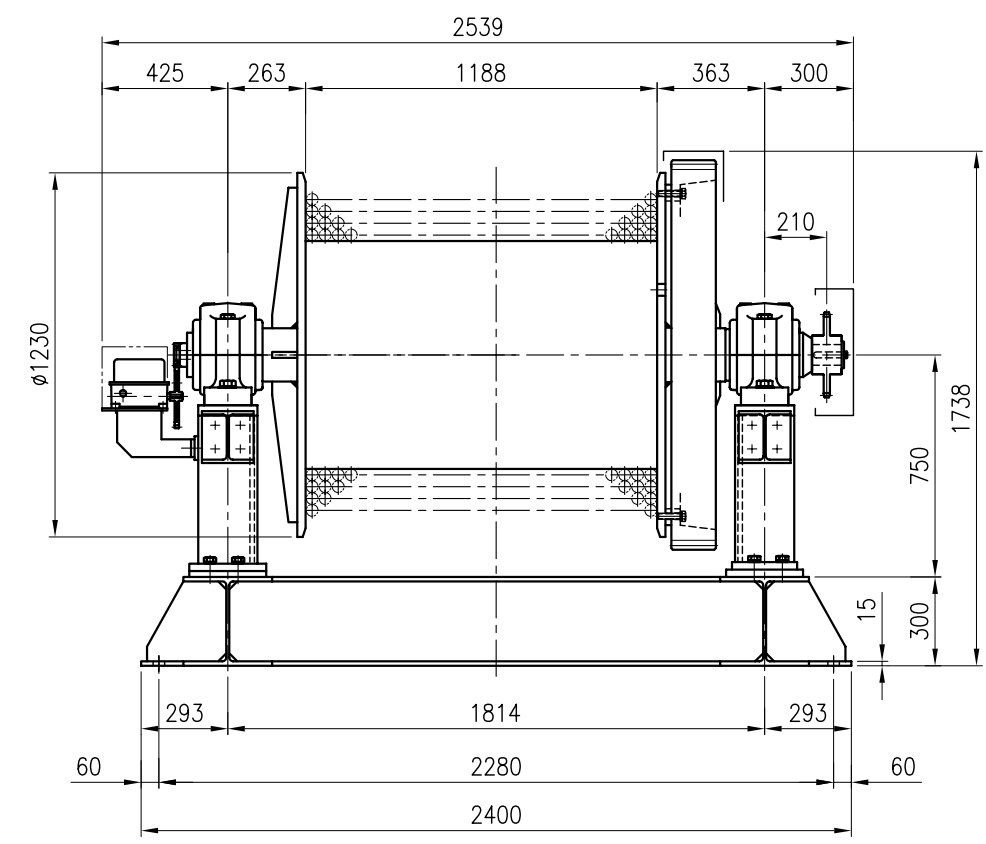
ON 0MG

NO	DESCRIPTION	MAT'L	Q'TY	UNIT TOTAL		REMARKS
				WEIGHT (Kg)		



SPECIFICATION			
MODEL	SHW-E-0200		
LOAD RATER	20 TON		
SPEED	10 M/MIN		
MAIN MOTOR	ELE. POWER	37 KW x 6P	
	SPEED	MAX. 1200 R.P.M	
	BRAKE	ELEC. MAGNETIC DISC BRAKE "B"-TYPE	
DRIVE RATIO	REDUCER	1/132.86	1/394.6
	RING GEAR	1/2.97	
WIRE ROPE	ø40 (DRUM CAPACITY - 4 LAYER 300M)		

W/T : ABOUT 12.000 KG



SURFACE	Hmax(u)	3S	6S	12S	25S	50S
SYMBOLS	▽▽	▽▽	▽	▽	▽	▽

NO.	DATE	REVISIONS & DESCRIPTION	Drawn	Checked	Reviewed	Approved

		SCALE	N/S	DATE	-			
PROJECT	-	DIM.	mm	PRO - JECTION				
TITLE	20TON WINCH	Customer	-	DWG No.	A - SHM - W120 - 01			
Division	Checked	Reviewed	Approved	Division	Drawn	Checked	Reviewed	Approved
Signature				Signature	H.S.KANG			
Date				Date				
Cod No.								